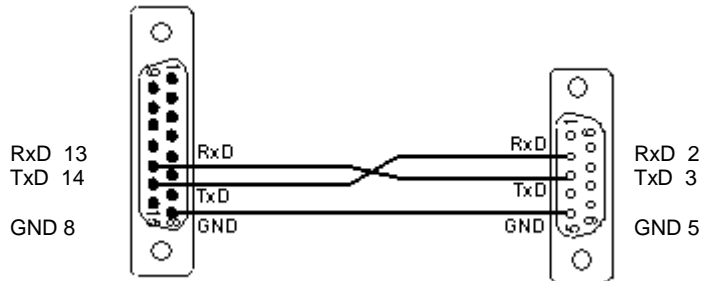


RS232 Interface Cable for BMR SFU Frequency Converters

1. Frequency Converter: SFU0200, 0102, 0202, 0300, 0401

SFU: DSUB-15 Stift / male

PC: DSUB-9 Buchse / female

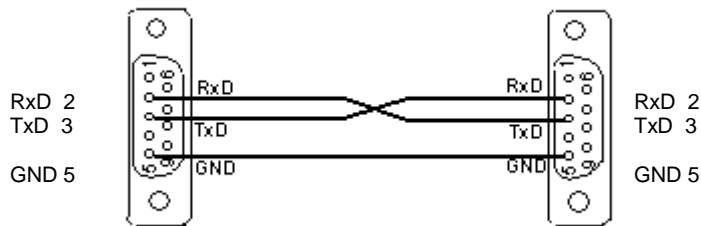


shield connected with case /
Abschirmung mit Gehäuse verbunden

2. Frequency Converter: SFU0302, 0501, 0601

SFU: DSUB-9 Buchse / female

PC: DSUB-9 Buchse / female



shield connected with case /
Abschirmung mit Gehäuse verbunden

3. Frequency Converter: SFU 0154, 0156

SFU: 10 Pin Buchsenleiste /
Header female

PC: DSUB-9 Buchse / female

